



# IIS SANDRO PERTINI

ERASMUS+  
FARMERS FOR FUTURE



Funded by the  
European Union



HOW CAN WE OPEN A BUSINESS IN FARMING OR  
ANIMAL REARING IN ITALY?





**FIRST  
REQUIREMENTS**



**OPEN A VAT  
POSITION**



**CREATE AN  
ATECO CODE**



**REGISTER AT  
CAMERA DI  
COMMERCIO**



**REGISTER AT  
INAIL**



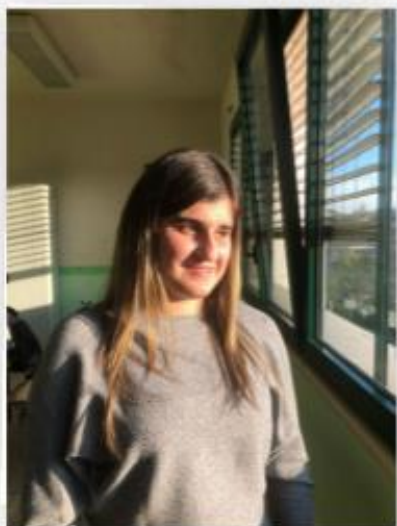
**REGISTER AT  
INPS**



**VISIT SUAP**







# FIRST REQUIREMENTS

**FIRST OF ALL YOU NEED TO HAVE:  
A DIGITAL IDENTITY  
A FISCAL CODE  
A CERTIFIED EMAIL**





## STEP 2

OPEN A VAT POSITION AT AGENZIA DELLE ENTRATE







## STEP 3

### CREATE AN A.T.E.C.O CODE

THIS CODE DESCRIBES WHAT YOU DO IN YOUR FARM

IN EXAMPLE IF YOU HAVE A REARING AND FARMING COMPANY YOU'LL GET THE FOLLOWING CODE: 01.50.00





## STEP 4

REGISTER AT CAMERA DI COMMERCIO AND GET A NUMBER THAT ALLOWS YOU TO SELL YOUR PRODUCTS.

CAMERA DI COMMERCIO IS THE TRADE CHAMBER. THERE IS ONE FOR EACH PROVINCE.



CAMERA DI COMMERCIO  
FROSINONE LATINA



Funded by the  
European Union







## STEP 5

REGISTER AT INPS AND INAIL TO PAY YOUR PENSION AND THE INSURANCE TO PROTECT YOURSELF FROM ACCIDENTS AT WORK





## STEP 6

COMMUNICATE YOUR INTENTION TO OPEN A BUSINESS TO SUAP WHICH IS THE OFFICE DEDICATED TO BUSINESS AT A LOCAL LEVEL, THEY WILL ASK YOU ABOUT ALL CERTIFICATES NEEDED. IT TAKES ABOUT 2 MONTHS TO GET THEIR ANSWER.



Funded by the European Union



Benvenuto nella nuova versione dello sportello telematico: qui potrai compilare tutte le tue nuove pratiche. Nella scrivania del cittadino troverai tutte le pratiche che attraverso la precedente versione dello sportello telematico.







# HOW MUCH DOES IT ALL COST?

IF YOU WANT TO OPEN A BUSINESS YOU HAVE TO PLAN TO SPEND ABOUT 500 TO 1000 EURO IF YOU NEED THE HELP OF AN ACCOUNTANT. IT ALSO DEPENDS ON THE SIZE OF YOUR FARM.

YOU ALSO NEED TO CONSIDER THAT YOU'LL SPEND ABOUT 4000 EURO EVERY YEAR TO COVER THE COSTS OF BUROCRACY.



# Thank you for your attention!



Funded by the  
European Union

